

Toddler Child Care

is for ages 16-31 months

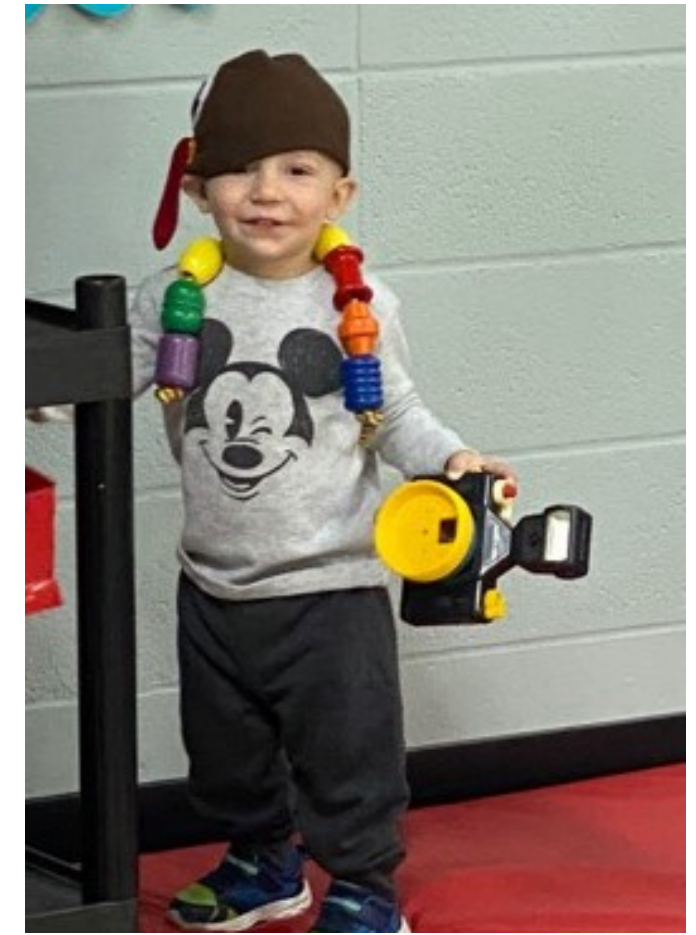
The toddler staff provide individual care with a play based learning environment for an active day of play and learning and with hugs, patience and positive reinforcement.

In the classroom we provide:

a faith based curriculum, the kids enjoy the following daily activities



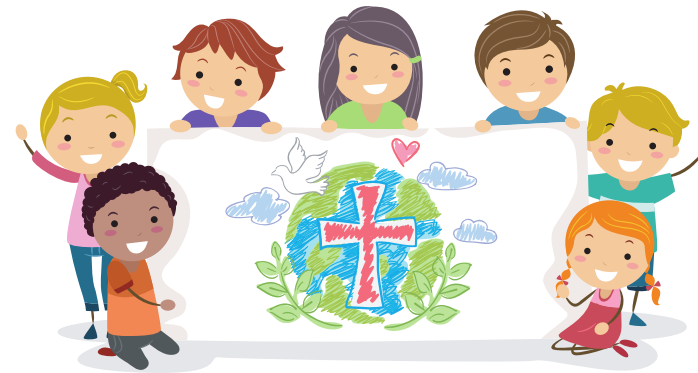
- *art and sensory projects
- *music & movement
- *gym time / outside play ground
- *story time
- *small and large group time



Our room follows a ratio of 1 teacher for every 7 toddlers.

Toddler Typical Day

To maintain consistency for your child, staff will follow a daily schedule including planned activities, indoor and outdoor play, meal times, rest time, toilet training, and faith and Jesus time.



We participate in a food program that provides daily healthy foods at



Breakfast
Lunch
Snack



Daily communication is provided through the Bright Wheel App and conversations at drop off and pick up.

Parent/Teacher conferences are twice per year

